



SANCTIONED BY & IN COOPERATION WITH:



**2021 CANFIELD FAIR TRACTOR and TRUCK PULLS
SATURDAY, SEPTEMBER 4, 2021 at 7:00pm**

PIT GATE INFORMATION

Pullers should be fully aware of the fact that harness racing takes place between 11:00am and 2:00pm (on Saturday) in the exact same area where the pulls happen that evening. For that reason, NO haulers are permitted into the infield until after the last horse leaves the infield at approximately 2:00pm.

Any hauler that manages to get into the infield before 9:00am will be escorted out of the infield by security before the horse racing starts.

A “holding area” has been established near the entrance to the infield pit area. This “holding area” is open at Midnight and will contain roughly thirty (30) haulers. Once this “holding area” is full all additional arriving haulers will be parked quite a distance away in the back parking lot area on the Fairgrounds. These units will be moved up once the pit gate opens to allow those from the “holding area” into the Pit area.

If you are one of the early arrivers and get into the close up “holding area” you may register and receive your credentials and leave you hauler in the secure area until after the harness racing is completed and then transition as a group into the normal pit area for the pulls.

PIT PASSES and REGISTRATION: These will be available at both the USA-EAST registration trailer and at the PPL registration area. USA-EAST classes will use the USA-EAST entry trailer and PPL classes will use the PPL registration. ALL BIG RIGS/HOT ROD SEMIS will utilize the USA EAST Registration Trailer. Registration will open at 11:00am for the USA-EAST classes and at roughly the same time for the PPL classes. REMINDER you can pre-register for this event by following this link until Thursday at Midnight.
<https://forms.gle/SC8ZDYJRxDXrQSHA>

AT THE TIME OF REGISTRATION EACH TRACTOR or TRUCK or SEMI WILL BE ALLOWED UP TO FOUR (4) 'ALL ACCESS' PIT PASSES. THESE WRISTBANDS GIVE TOTAL ACCESS TO THE CANFIELD FAIR AND TO THE PIT AREA ONCE THE PIT GATE OPENS AT ABOUT 2:00pm. NO OTHER 'FREE' PASSES ARE AVAILABLE TO PULLERS. PERSONS RECEIVING THESE PIT PASSES MUST BE PHYSICALLY PRESENT TO SIGN THE 'WAIVER FORM'.

Additional PIT PASSES will go on sale at 11:00am near the entrance to the PIT AREA at a cost of \$25.00 with a signed waiver required. These passes are sold on a 'first come – first served' basis until the supply is exhausted. A total of 1000 PIT PASS wristbands are available for the day of the pull. THESE PURCHASED WRISTBANDS ALLOW TOTAL ACCESS TO THE CANFIELD FAIR AND TO THE PIT AREA ONCE THE PIT GATE OPENS AT ABOUT 2:00pm.

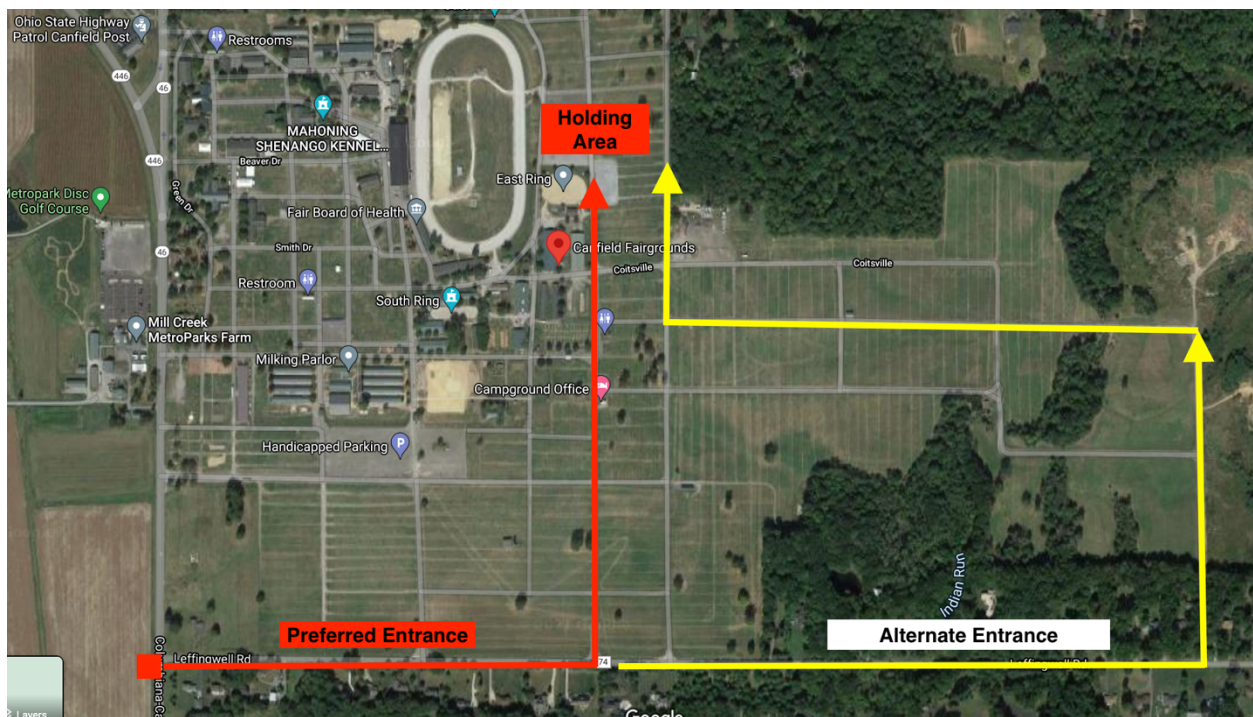
Pullers arriving late may register until 5:15pm and receive four (4) Pit wristbands and may immediately enter the Pit Area. However, those persons travelling with you (over four) may not still be able to purchase additional Pit Pass wristbands if the supply is exhausted. Those extra persons would have to purchase grandstand seats – if available. All registration will close at 5:15pm. No tractors or trucks or semis will be permitted to register for this pull after 5:15pm.

At 5:30pm the PIT GATE will be closed and LOCKED. No additional persons or haulers or pullers will be permitted to enter the Pit area after 5:30pm. The sale of Pit Passes (in the unlikely instance where any remain) will cease at 5:30pm. The Pit gate will be manned by security ONLY after 5:30pm.

DIRECTIONS INTO THE FAIR:

RTE 46 (Columbiana Canfield Rd) goes directly in front of the fairgrounds and gets rather backed up during the fair. If you are coming South on RTE 46 please plan accordingly and allow plenty of time. The best route, if possible, for you would be to come North on 46 from the South to avoid traffic in front of the fair grounds.

Pullers will be entering off of RTE 46 on to Leffingwell Rd, continue to Gate 11 and you will be directed to the holding area near the track. If the main holding area has already filled up you will have to continue to Gate 13 for the alternate holding area. Please see the map.



Parking Map For Pullers

